

# WEEKLY SPECIALS

CALL US NOW 201-227-7105



NEW YORK



NEW JERSEY



CONNECTICUT

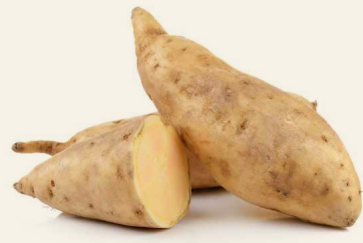


PHILADELPHIA



## ASPARAGUS

XXL WHITE - HOLLAND 11 LB  
LOCAL NJ ASPARAGUS 28 LB



## SWEET POTATOES

LOCAL NJ WHITE 18 LB  
BABY SWEET POTATO 10 LB



## STONE FRUITS

APRICOTS CALIFORNIA 18 LB  
PEACHES TRAY PACK 18 LB  
PLUMS BLACK & RED 28 LB  
NECTARINES 18 LB



## EDIBLE FLOWERS

MARIGOLDS 50 CT  
ALYSSUM 50 CT  
BORAGE BLOSSOM 100 CT  
CORNABRIA BLOSSOM 50 CT  
PANSIES 50 CT  
RAINBOW ORCHIDS 100 CT  
POPCORN SHOOTS 4 OZ  
SALTY FINGERS 50 CT



## MUSHROOMS

GOLDEN OYSTER 3 LB  
MOREL 1 LB  
CHANTERELLE 1 LB



## TINY VEGGIES TURNIP, RADISH, BEETS, OR CRUDITE

50 CT



## CHERRIES

16 LB

NEW YORK



## LOCAL RAMPS

1 LB

SATUR FARMS



## LOCAL GREEN GARLIC

1 LB



## ENGLISH PEAS

10 LB / 25 LB

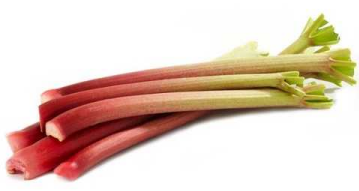
NEW YORK



## LOCAL FIDDLEHEAD FERNS

1 LB

HOLLAND & WASHINGTON



## RHUBARB

20 LB / 10 LB



## BABY BULB ONION

8 LB



## GOLD BAR SQUASH

10 LB



## FAVA BEANS

1 LB



## YELLOW WAX BEANS

1 LB



## MEYER LEMONS

10 LB



## RED DRAGON FRUIT

5 LB



## FUYU PERSIMMONS

18 CT



## GOLD KIWI

33 CT

LEMON, LIME, ORANGE



## FRESH SQUEEZED JUICES

KENNESAW 1/2 GAL



## PASSION FRUIT

5 LB



## STAR FRUIT

10-15 CT



## LYCHEE

1 LB



## PINK PINEAPPLE

2 CT



## HONEYGLOW PINEAPPLE

6 CT



## GOOSEBERRIES

8 CT



## POMEGRANATE SEEDS



## ORANGES MANDARIN

20 LB



## ELEPHANT GARLIC

1 LB / 10 LB



## RED AND TASTY TOMATO

2 LAYER 20 LB